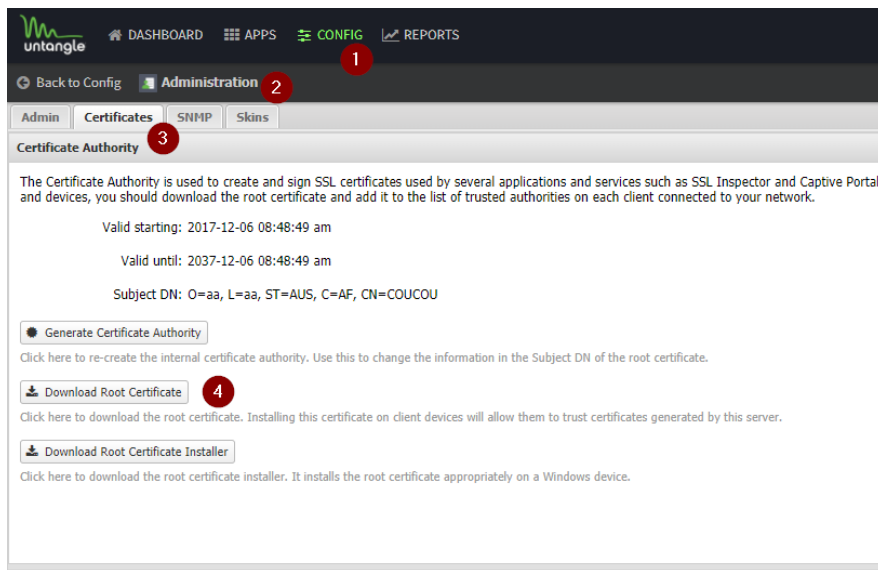


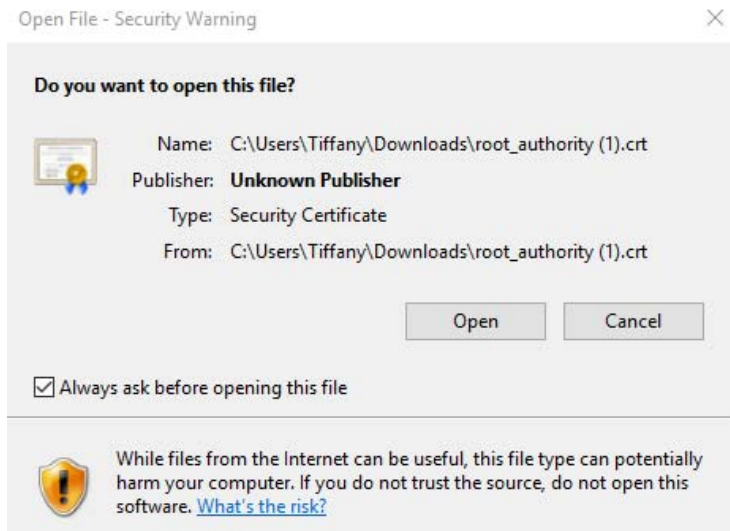
Manually Installing Root Certificates In Windows (Chrome & Internet Explorer)

To install a trusted root certificate manually in Microsoft Windows, you will want to download the certificate from the Untangle NGFW.

This can be downloaded in **Config > Administration > Certificates** section of the NGFW by clicking the **Download Root Certificate** button. You can also generate that certificate at `http://<<InternalIPofUntangle>>/cert`

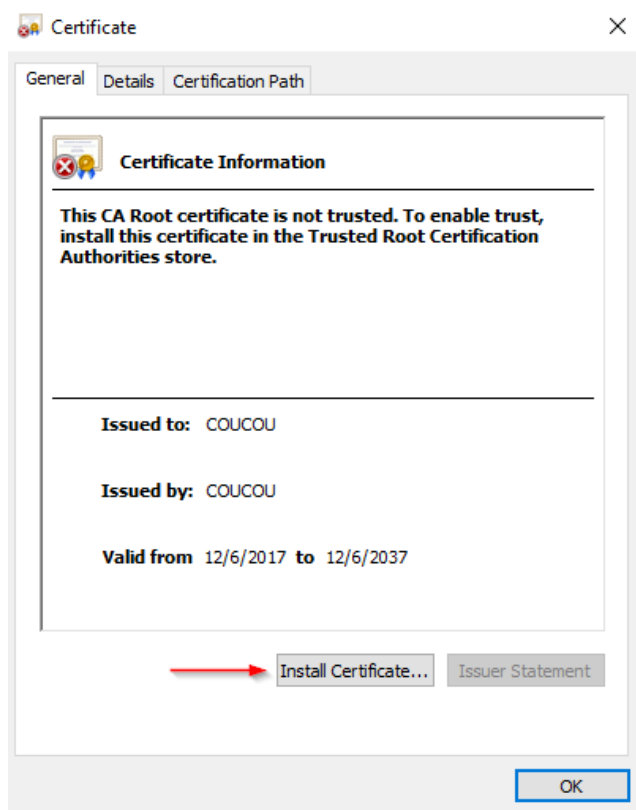


You will then be asked if you want to open the file. Select **Open**

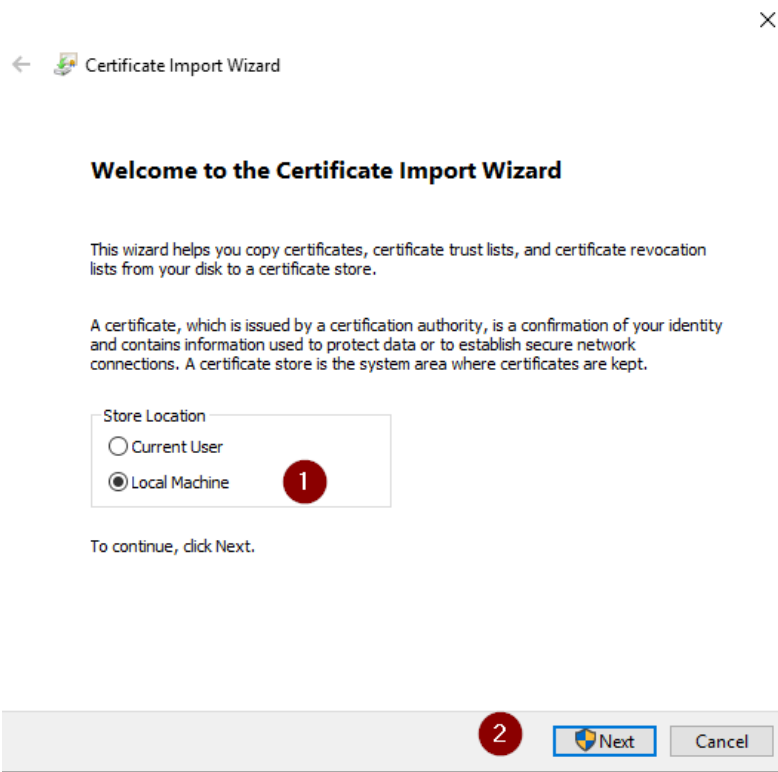


Once you have this downloaded, double-click on the .crt file and Windows will open the certificate.

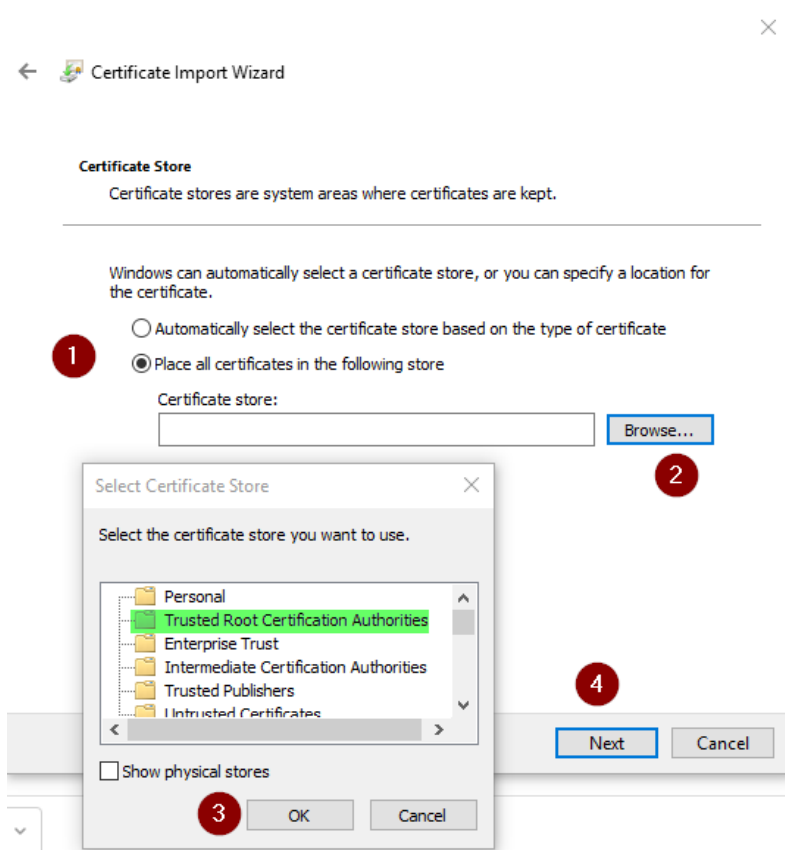
1. In the certificate window click on **Install Certificate...**



- This will bring up the Certificate Import Wizard. Select **Local Machine**, then click **Next**



- Allow the program to make changes to your machine.
- Select "Place all certificates in the following store", then click **Browse...** Select the "Trusted Root Certification Authorities" store, click **OK**, then click **Next**.



5. You should then receive this notice:

